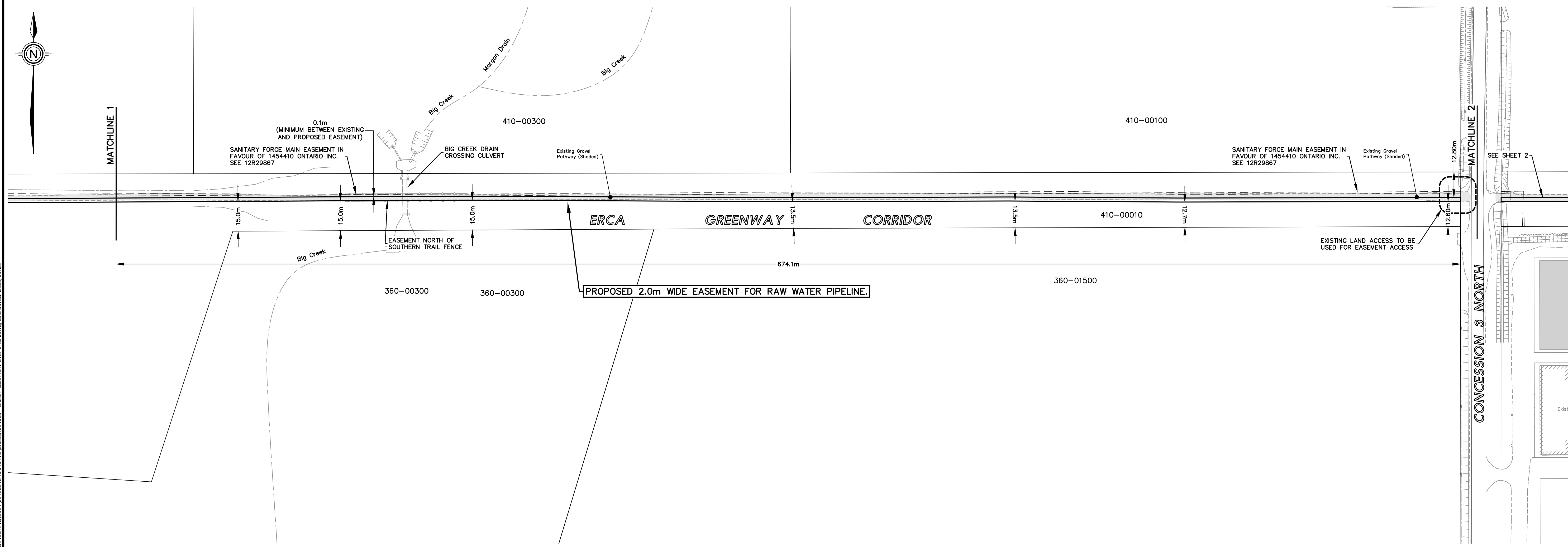
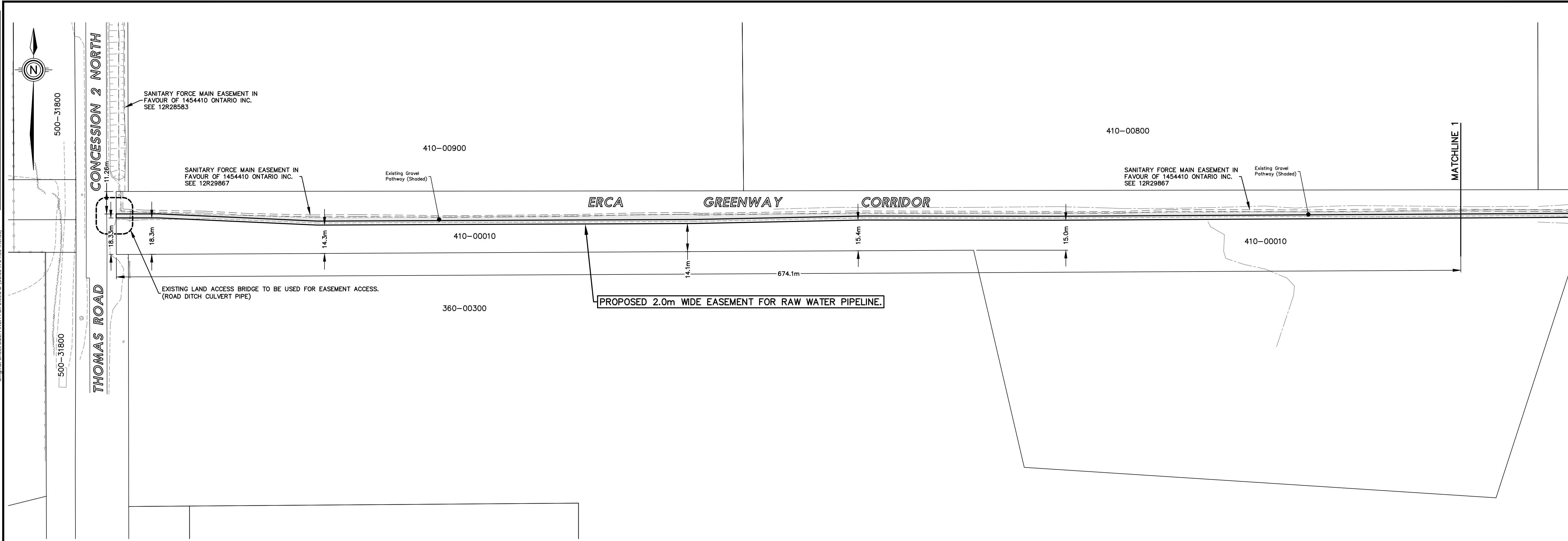


Original Sheet Size: A3 (11.69" X 16.54") Full Bleed D (86.00" X 24.00")

Z:\PROJECTS\ENGINEERING\2024\24023\CADD\DWG\Sheets\E24023 - Sketch Easement Over ERCA.dwg, Last Saved: 2025/05/20



GENERAL NOTES:

- THE ACCURACY OF EXISTING UTILITIES SHOWN ON THESE DRAWINGS ARE NOT GUARANTEED BY THE OWNER OR N.J. PERALTA ENGINEERING LTD. OTHER UTILITIES MAY BE PRESENT OR THE UTILITIES SHOWN MAY DIFFER IN SIZE OR LOCATION SHOWN. CONTRACTOR SHALL LOCATE AND VERIFY DEPTHS OF ALL UTILITIES PRIOR TO CONSTRUCTION AND ADVISE THE ENGINEER OF ANY CONFLICTS. SUPPORT UTILITIES WHEN ENCOUNTERED.
- ALL PLAN DIMENSIONS AND ELEVATIONS SHOWN IN METRES UNLESS OTHERWISE NOTED. DIMENSIONS DENOTE HORIZONTAL DISTANCE ALONG GROUND UNLESS OTHERWISE NOTED.

REVISED ANNOTATION	B.N.D.	2025/05/20
EASEMENT ADJUSTMENTS	B.N.D.	2025/05/15
CONSENT APPLICATIONS	B.N.D.	2025/05/08
ISSUED FOR:	BY:	YYYY/MM/DD

ISSUES/REVISIONS:

Peralta Engineering
NJ. Peralta Engineering Ltd.
Consulting Engineers
45 Division Street North
Kingsville, ON
N9Y 1E1 Canada
P: 519-733-6587
F: 519-733-6588
peraltaengineering.com

ENGINEER'S SEAL:

**PRELIMINARY
NOT FOR
CONSTRUCTION**

This document has not been checked and is for general information or comment only.

CLIENT/PROJECT/LOCATION:

**SKETCH OF UTILITY
EASEMENTS OVER
ERCA GREENWAY
CORRIDOR FOR
CONSENT
APPLICATIONS**

SHEET TITLE:
**ERCA CORRIDOR
WEST OF
CONCESSION 3
NORTH
PLAN**

DESIGNED BY:	DATE:
B.N.D.	MAY 20, 2025

DRAWN BY:	SCALE:
B.N.D.	1:1,000

SHEET:	OF:
1	2

PROJECT No.:
E24-023

